



BURGER 115' RPH MOTOR YACHT

## ENDLESS STYLE

Start here. Give it the custom touches and grand statements that create a Burger in your own personal style. Start here for a Burger that's uniquely yours **for a lifetime of journeys.**



# INTRODUCING THE BURGER 115' MOTOR YACHT

The Burger 115 Raised Pilot House Motor Yacht is a sleek, modern yacht that arrives in any port as an announcement. This is a Burger for adventure and exploring. Work with Burger to customize her for your unique requirements — a collaboration that combines your mission with our heritage.

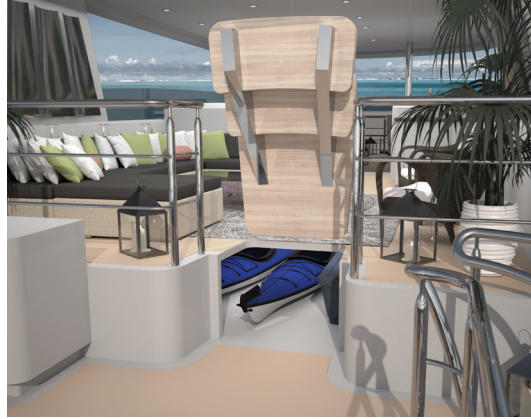
Imagine what you can build — dreams, getaways, the freedom of being at sea with no land in sight, an heirloom and a lifetime of memories crafted as a member of the Burger family.



# START YOUR JOURNEY

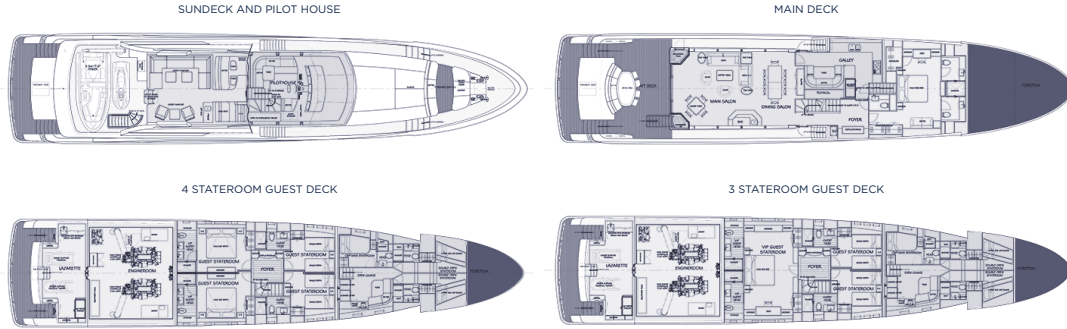
Designing and building a Burger is a partnership. The Burger 115's unique, raised pilot house and forward-facing exterior lounge gives you and your guests a stunning setting as you set out for new destinations and adventures.

With salon spaces to entertain and guest decks for privacy, this is a Burger over which you have as much control as you want. Building your yacht is a joyous journey and we'll join you, every step of the way.



## STYLE. POWER. OPTIONS.

The Burger 115 has a top speed of 22 knots and a cruising speed of 18 knots. All available in comfort and a style you complete with Burger's design team. This exceptional motor yacht will be crafted to your specifications by Burger's experienced and meticulous team. Start here and finish with the adventure of a lifetime.



# BURGER

## PERSONALIZED. PRIVATE. CRAFTED FOR YOU.

JOIN THE BURGER FAMILY. **LIVE A LIFE WITHOUT LIMITS.**

Email us at [Limitless@BurgerBoat.com](mailto:Limitless@BurgerBoat.com) or call +1 920-686-5117.

## 115' RPH MOTOR YACHT | SPECIFICATIONS

LENGTH OVERALL	115' 00" (35.05 m)
BEAM (MAXIMUM)	25' 00" (7.62 m)
DRAFT (HALF LOAD)	5' 06" (1.68 m)
GROSS TONNAGE (APPROX)	250 GT ITC
MAXIMUM SPEED (APPROX.)	22 Knots
CRUISING SPEED (APPROX.)	18 Knots
FUEL CAPACITY (APPROX.)	7,925 U.S. Gallons (30,000 L)
FRESH WATER CAPACITY (APPROX.)	1,200 U.S. Gallons (4,540 L)
BLACK/GRAY WATER CAPACITY (APPROX.)	1,400 U.S. Gallons (5,300 L)
EXTERIOR DECK AREA	1,388 Sq. Ft. (129 m <sup>2</sup> )
INTERIOR AREA	2,415 Sq. Ft. (224 m <sup>2</sup> )
NAVAL ARCHITECT	Burger Design Team/Gregory C. Marshall
INTERIOR DESIGN	Burger Design Team/Gregory C. Marshall
CLASS	ABS/MCA

[BURGERLIMITLESS.COM](http://BURGERLIMITLESS.COM)

