



BURGER

CUSTOM YACHTS OF DISTINCTION SINCE 1863



USA +1 920.686.5117
sales@burgerboat.com
burgerboat.com



Burger —a modern shipyard in Wisconsin

Burger Boat Company is a modern shipyard located in Wisconsin—known for award winning cheese and brews— and Manitowoc is home to extraordinarily skilled shipbuilders—professionals who take pride in the quality of their work. Each take a personal interest in the success of every vessel they work with. Every individual is a practitioner of the traditional disciplines, yet eager to embrace meaningful innovation.

Burger has in-house design and engineering teams that also work with some of the world's most respected designers to create new and better hull design and interior arrangements to meet the most exacting requirements of every customer.

Burger is proud of their people and facilities and welcome the opportunity to show them off.

BURGER
EST. 1863

CUSTOM YACHTS OF DISTINCTION SINCE 1863



Choosing the right yard

With a large number of shipyards available, there are pros and cons to the criteria used in selecting a yard that is best for you. Take into consideration, your requirements, the yards capabilities and the aspiration of the project. All of these considerations ultimately results in a risk.

However, Burger Boat Company addresses possible tribulations while establishing a personal and strong relationship to you and to your yacht. The key to a successful custom build project is having an extensive and detailed proven process along with key knowledge of the yachting industry.

A few key areas to think about while considering a shipyard:

- How long has the yard been in business?
- What is the known quality and recent builds?
- Is the lead time and scheduling correct for your needs?
- Does the yard have known expertise in engineering, design, technology, and materials?
- Does the yard's location make sense for your needs?





Facilities

Burger Boat Company is an established yacht builder that was founded in 1863. Burger has a long tradition of constructing a wide range of vessels to meet the most demanding requirements. The shipyard offers an eight-acre full-service construction site located in Manitowoc, Wisconsin on the western shore of Lake Michigan.

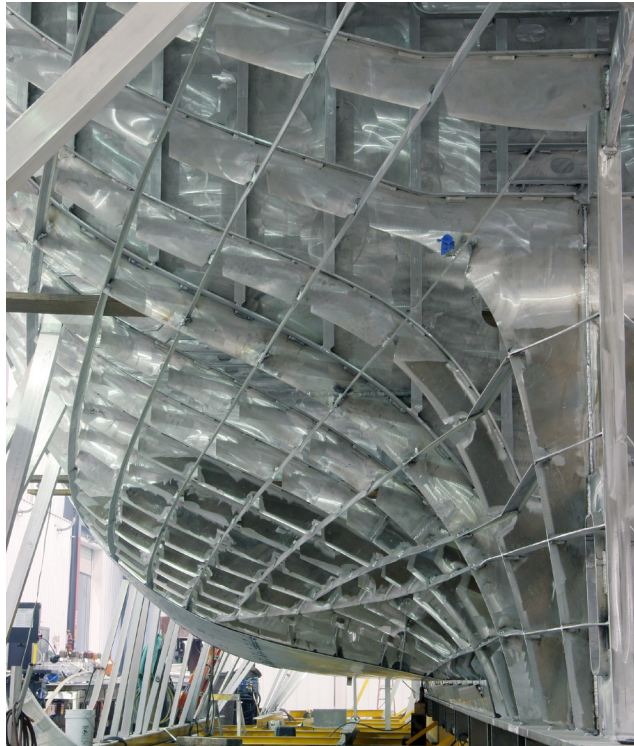
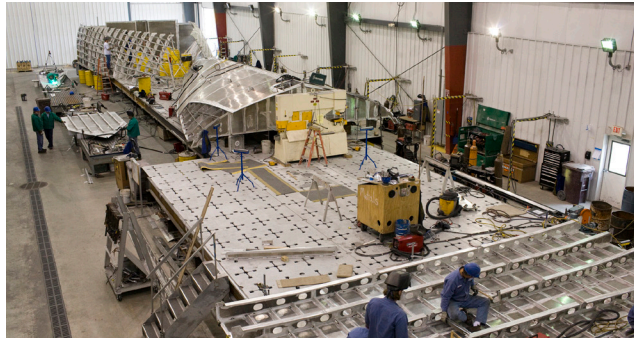
Manufacturing space

- Eight heated construction bays accommodating vessels up to 200 feet (60m)
- Metals shop
- Mechanical/hydraulic shop
- Machine shop
- Plumbing shop
- Electrical shop
- HVAC shop
- Complete Joiner facility including, molder, CNC 3-axis router and heated spray booths
- 500 Metric Ton TRAVELIFT®
- Fenced in property with 24-hour security
- Concrete paved yard
- Located on Lake Michigan between Milwaukee and Green Bay, Wisconsin



Metals

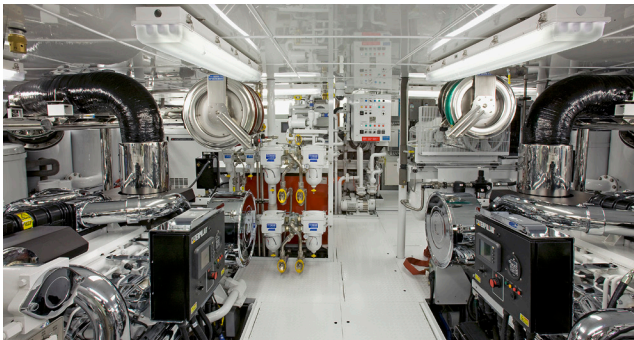
- ABS certified welders
- State-of-art welding equipment
- Overhead cranes
- Large metal platens
- Aluminum shaping and cutting equipment





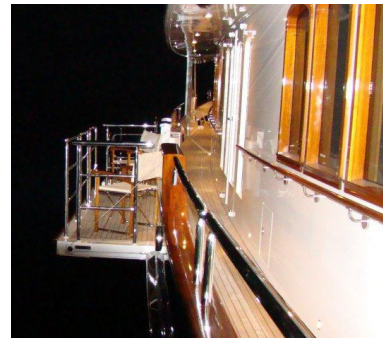
Mechanical/Electrical

- Experienced mechanics and pipe fitters
- Experienced electricians
- Pipe benders
- Tubing benders
- In-house HVAC duct fabrication



Outfitting

- Highly skilled craftsman
- TIG and MIG welding machines
- Tubing benders
- Milling machine
- Metal lath





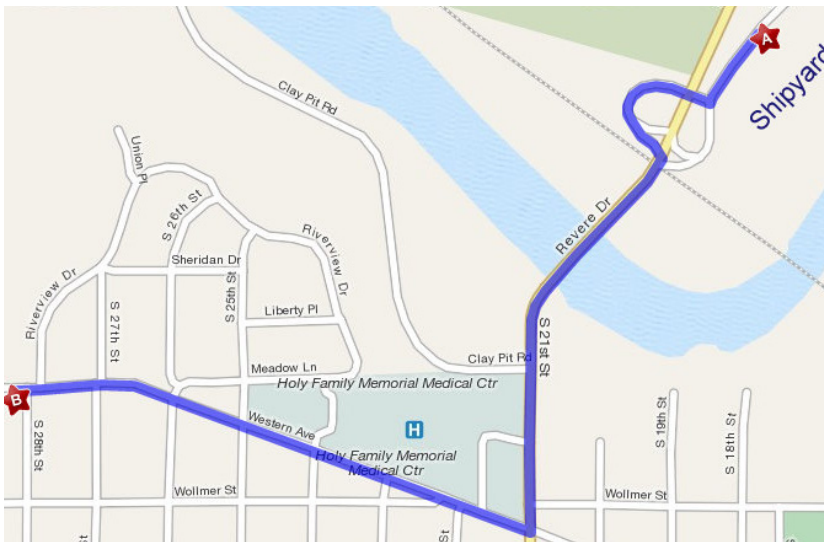
Launching

- 500 Metric Ton TRAVELIFT®



Joiner Facility

- Located less than one mile from the shipyard





Joinery

- Highly skilled craftsman
- 3-axis CNC router
- 5-head molder
- Edge banding machine
- Sliding panel saw
- Straight Line rip saw
- Miter saw with Tiger Stop
- 36 inch thickness sander
- Planers
- Jointer
- Saw stop table saws
- Shaper
- Vacuum press
- Pneumatic clamping table
- Dove tail machine
- Two heated down draft spray booths
- Filtered sanding booth
- Humidity controlled





Engineering and Administration

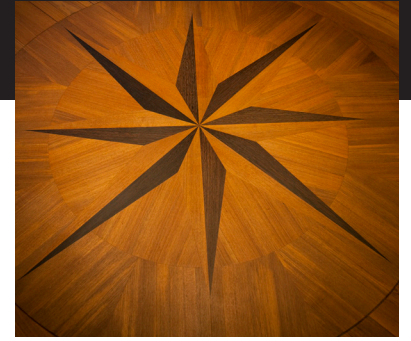
Engineering

- Naval Architecture
- Mechanical
- Electrical
- Outfitting
- Yacht Designer
- Interior Designer
- Joiner Designer

Administration

- Sales and Marketing
- Accounting
- Supply Chain



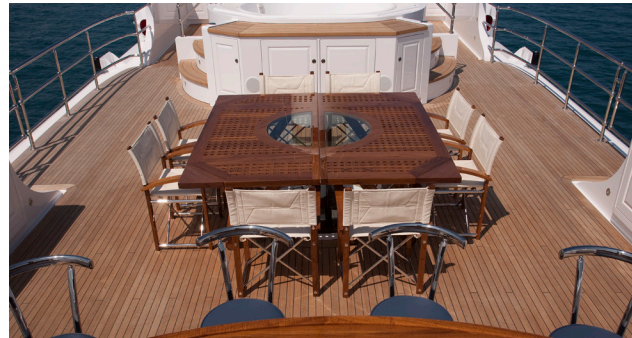


Burger...where extraordinary is ordinary

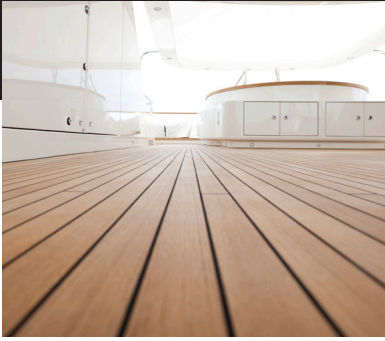
Every Burger starts with a blank sheet of paper and a vision of what might be. Key design elements form and the vision starts to take shape. Burger luxury custom yachts are arranged, equipped and finished to provide complete comfort and enjoyment, even at the most remote destinations.

Each yacht is a statement of luxury that requires the work of skilled artisans with an unsurpassed commitment to quality. Burger is proud to be recognized by industry experts—through various award and accolades, but the best testaments are from our customers.

For those who are passionate about exceeding the ordinary, Burger takes typical to extravagant and customary to astonishing.



the Process



Defining your vision

The first step is to share your dreams with the Burger design team and engineering staff. An in-depth design brief is utilized to help define your vision in and document priorities for your yacht. A personal visit to the Burger facilities is recommended to learn how your yacht will be constructed and to witness the true value of Burger's experience and craftsmanship.

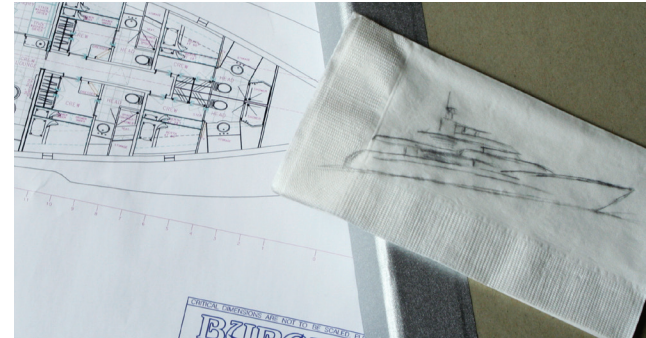
Design

At this stage, your dreams begin to take shape in the form of dramatic conceptual designs and renderings. Design plans for the exterior and interior of your exclusive yacht are presented for your direction or approval. Cost estimates are developed and reviewed with you before moving forward. Conceptual designs and renderings include:

- Hull designs
- Exterior styling and interior floor plans
- Interior elevation renderings
- Engines, propulsion and electric generation equipment selection
- Special requirements including recreational and/or shore tenders and storage options
- Navigation electronics and entertainment system descriptions

Approval

Reviewing and approving the final design specifications is one of the last steps before commissioning your yacht. Burger will prepare a detailed design and specification breakdown that provides descriptions of each aspect of your yacht's construction, from its development milestones to your key points of approval. After reviewing and agreeing on the details, you approve the contract and your yacht is on the way to fruition.





the Process



Build

The Burger yacht you've dreamed of, and designed, is about to become a reality. Each step of the build is documented before work begins. Burger provides a detailed timeline that describes each step of the process. This type of detail positions you as an integral part of the build process. You remain involved every step of the way.



Launch

Months of planning and construction culminate at this moment. It's time to launch your new Burger yacht built exclusively for you.



Sea Trials

Along with the Burger team, you and/or your Captain take your new Burger yacht through various sea trials. At-sea observations and detailed walk-through inspections are conducted. At this stage, final modifications and refinements are made.

Delivery

Congratulations, you are now the owner of your distinctive Burger and have joined the most exclusive fleet of yachts in the world. Your new Burger yacht will be delivered to the location and port of your choice.



BURGER

USA +1 920.686.5117
sales@burgerboat.com
burgerboat.com

