



Burger Boat Company



The employees of Burger Boat Company carry on more than 150 years of tradition while providing diverse, high-quality products.

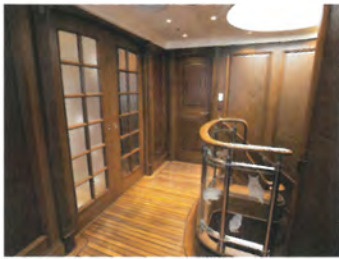
When someone mentions woodworking in conversation, another person might be inclined to think of more traditional examples, such as cabinets and tables in a residential building. Boats and yachts might not enter the discussion so quickly.

But for Burger Boat Company, woodworking and maritime construction are closely intertwined. The company is based in Manitowoc, Wisc., and creates millwork, luxury yachts and custom furniture. Burger Boat Company started producing schooners as far back as 1863. During that time, it has diversified its selection, all while offering a high-quality product.

A Rich History

The company's history can be traced back to 1846. That year, Henry Burger and his parents and siblings emigrated from Germany to the United States and eventually settled in Wisconsin. As Burger grew older, he apprenticed for a shipbuilder and became adept at the trade. He later relocated to Manitowoc and began building fishing vessels. Years afterward, he formed a business with his nephew, George B. Burger. Together, they expanded their repair services.

Although Burger eventually retired, the family's shipbuilding legacy continued in the form of his other nephew, Henry B. Burger, Jr. By incorporating gasoline engines into the boats he made, Henry B. Burger, Jr., revolutionized the business. When he passed away, his



wife and four children became the company's owners. In their care, the company built military vessels for the U.S. Army during World War I, weathered the Great Depression by producing fishing vessels and sold more military vessels to the U.S. Army and U.S. Navy during World War II. The company even went on to use aluminum, a previously experimental construction material.

Throughout the decades, Burger Boat Company's ownership changed several more times. However, the goal of providing custom, high-quality vessels has remained.

Expanding and Diversifying

Along the way, Burger Boat Company has encountered challenges, but it has overcome them. For example, earlier on in the company's history, things were quite different. Mike Mitchell, Burger Boat Company's vice president of operations, said joinery was previously made by hand. Nevertheless, he said the company's joinery department has grown significantly throughout the past decade, and the company is now housed in a facility with 50,000 square feet, 2,000 of which are used as an office area.

In addition to overcoming challenges, the company has honed its production of a high-quality product. The company was the overall winner in the Custom Woodworking Business Design Portfolio Awards in 2009 for the yacht *Ingot* and again in 2011 for the yacht *Sycara*.

continued on page 10





The Right Tools for the Job

Equipment

- Busellato CNC Jet 5 Machining Center
- Weinig 5 Head Molder
- Altendorf Sliding Table Saw
- SawStop Table Saws
- CTD Miter Saw with Tiger Stop
- Dewalt Miter Saws
- Omega Radial Arm Saw
- Diehl Straight Line Rip Saw
- Rockwell 20" Bandsaw
- Laguna 16" Band Saw
- Northfield 12" Jointer
- Delta 8" Jointer
- SCM 24" Thickness Planer
- Buffering Thickness Sander
- Brandt Edgebander
- Ritter Triple Spindle Borer
- Ellis Drill Press
- Ritter Single Head Shaper
- Max Vertical Spindle Sander
- Dodds Dovetailer
- Vacuum Pressing Bagging and Tabletop Equipment
- Router Tables
- SawStop Table Saws
- Holz-Her Vertical Panel Saw
- Geetech 15" Planer
- Powermatic 8" Jointer
- Ritter Edge Sander
- Dewalt Miter Saws
- Delta Drill Press
- Topcon Laser Levels
- 10' x 15' Sanding Booth with Filtration System
- Down Draft Spray Booth with Make-Up Air and Bake Cycle Control Panel
- Empire Pro Finish Cabinet System Media Blaster
- Kremlin Spray Equipment

Design Software

- AutoCAD
- Rhino
- Inventor
- MasterCAM

Burger Boat Company ... continued from page 9

Over the years, Burger Boat Company's selection of products has become diverse. Mitchell said the company participates in various markets, including marine, custom furniture, millwork, residential and commercial. Cabinet styling is selected by the designers, but the company usually uses dowel as the construction method. Materials include bookmatched, exotic and domestic, hard wood veneers, plastic laminate, solid wood, light ply core and custom metal features. Cabinet hardware comes from Accuride, SOSS, Salice, Sugatsune, Deltana, GSV and custom specialty hardware. For finishes, the company uses Interlux interior varnishes; Awlgrip and Awlbrite acrylic urethane; and Sayerlack polyurethane, polyester and paint products.

So, how does Burger Boat Company obtain work? Mitchell said the company works with brokers and designers and uses its reputation and many years of satisfied customers.

Into the Future

Even though Burger Boat Company has been in existence for more than 150 years, there is still much in store in its future. Mitchell said despite the fact that business has decreased due to the economy, the company has projects under way. He added that the future seems promising.

Additionally, Mitchell said working at Burger Boat Company provides high challenges and that creating interiors in such a way brings much satisfaction.

For more information about Burger Boat Company, call 920-686-5125 or visit www.burgerboat.com. ♦