

yard news



INFINITY, INC. TAKES A BOAT

The line-up for the launching of J-MAR on December 11, 1974, is led by Mrs. Lawrence A. Fleischman, extreme left, sponsor for the new 66' 8" yacht built for Infinity, Inc. To her right is Mr. Lawrence A. Fleischman, President of Infinity, Inc. Others present for the festivities included Mr. and Mrs. William Subr, Monsignor Eugene V. Clark, Mrs. Lillian Brenwasser, Martin Bressler and Martin Sadik. J-MAR's Captain Alan Graves and crew member were also standing by for the count down.

MORE ON THE INSIDE



A Day to Remember — October 28, 1974. Moments before SILVER CLOUD was slipped into the water, the launching party paused for the customary picture-taking. Left to Right: Henry E. Burger; the happy new owners, Mr. and Mrs. Hugh M. Pierce; Reverend R. Bruce Pierce; Mrs. Ralph M. Pierce; Reverend Doctor Robert Bruce Pierce; Mrs. Robert Bruce Pierce; Mr. and Mrs. Lyle E. Pierce; Captain and Mrs. Alfred D. Hyde; Mr. and Mrs. Hugh P. Pierce; Warren K. Bayless (kneeling); Mrs. Warren K. Bayless; Mr. and Mrs. Wm. F. Starrett; Miss Barbara Pierce; Mrs. Frederick Gaskell; Frederick Gaskell; Mrs. H. E. Burger; Mrs. Elias Gunnell; Elias Gunnell.

The Inside Story on J-MAR

J-MAR, new sixty-six footer built for Infinity, Inc. and launched last December has already seen an active season in Florida waters. Powered by twin GM 8V-71 TI Diesels and two 20 KW Westerbeke Auxiliary Generators, the jaunty J-MAR has a flying bridge with a duplicate set of steering and engine controls.

One-of-a-kind, the beautifully finished and appointed interior of J-MAR reflects the warm tones of natural butternut wood used throughout the deckhouse lounge, aft companionway and galley. Traditional teak was used in the pilothouse and for exterior trim. The staterooms are paneled in sliced white ash, repeated in the crew's quarters forward.

J-MAR's very ample list of electronic equipment includes a Decca Model RM 926 Radar, a Plath Model TMC Automatic Pilot, a Wagner Model N-250-1000 Hydraulic Steering System, a Raytheon Model DE-738L Depth Indicator, an Intech Model

V108 VHF/FM Radiotelephone on the flying bridge, an Intech Model V110 VHF/FM Radiotelephone installation in the pilothouse and a Northern Model 550 Single Sideband Radiotelephone.

Special mechanical installations include Bennett Electro Hydraulic Trimatic Trim Tabs, Jered Wavemaster Stabilizer Units, and a Bogen TQ-12 Ten-Station Intercom System.

The list of housekeeping appliances for J-MAR includes a Westinghouse Model LT-170M Washer, a Westinghouse Model DE-170M Dryer, a Westinghouse Model KC-535R Continental Range with Continuous Self-Cleaning Ovens, a Westinghouse 25-inch Model RS-258R Frost Free Refrigerator-Freezer, an additional Marvel Freezer Model MR 1043-M, a Westinghouse Model SU700 Dishwasher, a Waste King Model SS7000 Garbage Disposal and a GE Model CG550 Compactor.

Heating, and air conditioning are furnished by Cruisair.

Nothing Standard About the SILVER CLOUD

A quick check of J-MAR's predecessor, 72-foot SILVER CLOUD, built for Hugh and Margaret Pierce, Scarsdale, New York, points out that there's nothing standard about a Burger Boat these days other than a top-notch aluminum hull and top quality workmanship from stem to stern.

SILVER CLOUD, with a slightly longer profile than J-MAR and a large flying bridge, was launched in October of 1974. Owner specified power was a pair of D343 Caterpillar Diesels. Other priorities for sea-going comfort on this boat called for a wood-burning fireplace in the main salon (Heatilator Model 32028) and an organ to supplement the AM/FM stereo music system.

Natural Korina was selected by the owners to be used throughout the main salon and for the fireplace mantel, in the pilot-

(continued on fold out)

THE BURGER EXCHANGE

If you like to keep up with the Burgers, may we offer this word of explanation. We only note the Original Name of Yacht, Owner and Year Built with New Owner and New Yacht Name. Confusion will arise if you interpret our listing to mean that the new owner acquired his Burger directly from the original owner. There are often many owners in-between.

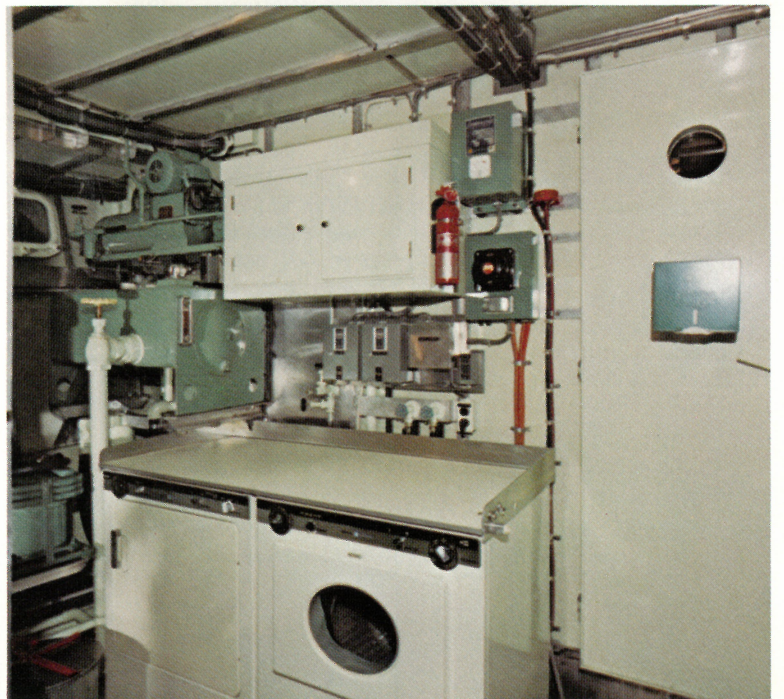
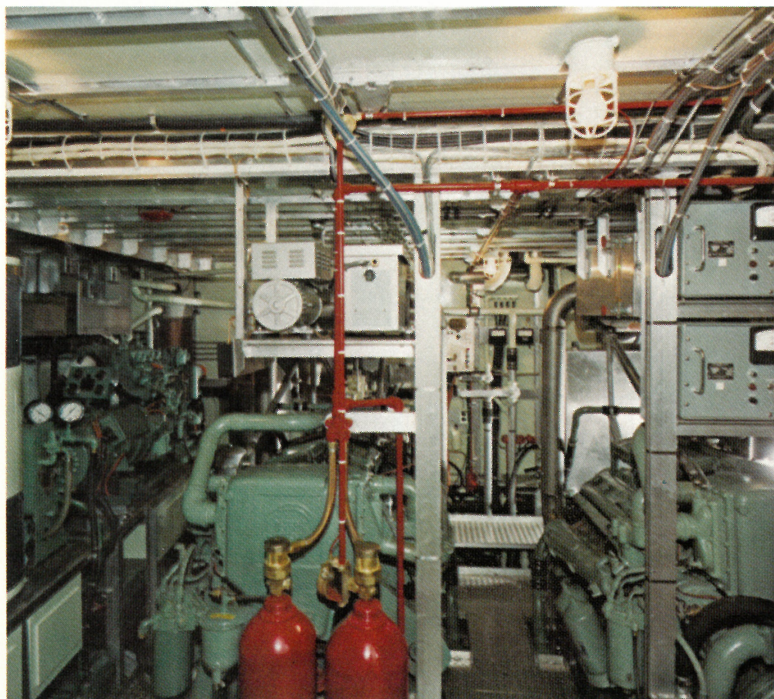
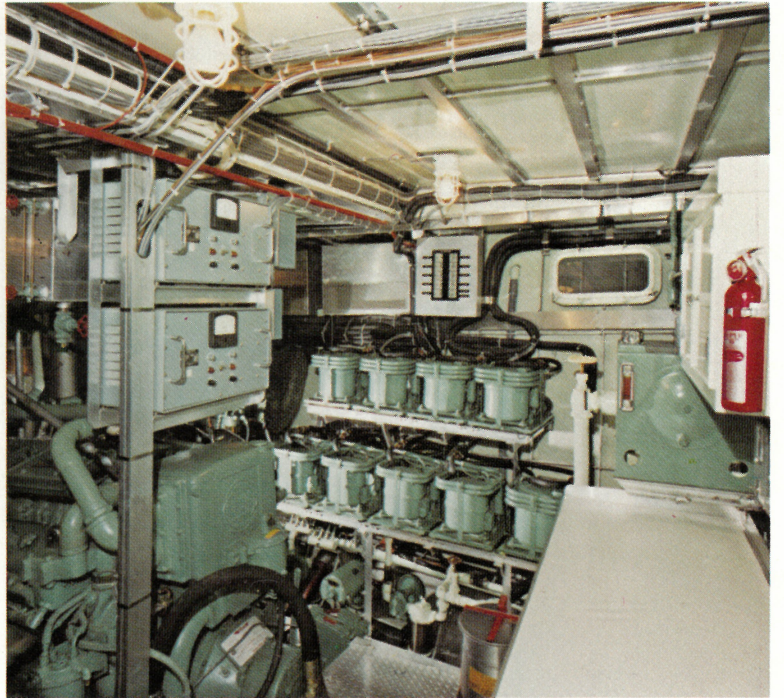
ORIGINAL NAME	ORIGINAL OWNER	YEAR	DESCRIPTION	NEW OWNER	NEW NAME
SEVEN SEAS	C. F. Johnson	1958	89' 0" Steel	Comal Corporation	GRAY HAWK
FLYING TIGER II	William D. Pawley	1962	65' 0" Steel	Frank A. Stuart, M.D.	POEWEGA
NAUTI-GAL	Frank Whiting*	1946	58' 0" Steel	General Electric Credit Corp.	SASHY I
WILLIE KAYE	William K. Jenkins	1955	53' 0" Steel	James E. Meekin, Sr.	SHANGRI-LA
POLARIS	Lawrence J. Plym	1950	53' 0" Steel	Lloyd Wm. Heinonen	FLO JO IV
SAND DOLLAR	Harlan Ray (Mrs.)	1969	66' 0" Aluminum	James P. Neill	SAND DOLLAR
MARY ALICE III	Buffalo Courier Express, Inc.	1948	57' 0" Steel	Robert Burns	SAMMY CHON
CAROLINE IV	Harold H. Elliott*	1958	65' 0" Steel	—	TALTA
STILL ROVIN' IV	R. W. Beeson	1961	55' 0" Aluminum	G. M. Fitzgerald	—
SHELMAR	Robert C. Wood	1965	63' 6" Aluminum	C. N. Frost	FIGURE FOUR
ALBATROSS	Harry I. Schuster	1969	64' 2" Aluminum	Harold P. Whitmore (Mrs.)	IMPULSE
HI-LADY	Houdaille Industries, Inc.	1956	60' 0" Steel	Gary Blankfort	REFERTOMAKER
MISS BUDWEISER	Anheuser-Busch, Inc.	1959	65' 0" Steel	Pacific Coast Disposal Corp.	FELICITY

* Deceased



TOTAL BEAUTY

Beautiful living and beautiful performance are exemplified aboard LAD, new Burger 72 built for the Lee A. Doerrs. A glimpse into the well-planned and well-equipped engine room foretells smooth-running performance. Bright, cheerful living spaces aboard promise happy cruising days ahead!





(continued from Page 2)

house, staterooms and aft study. As Hugh Pierce, a seasoned skipper, plans to run the SILVER CLOUD himself, the usual crew's quarters forward were finished as two additional guest staterooms, each with a private bath. A specially designed settee in the pilothouse welcomes "guest navigators."

Electronic equipment aboard the SILVER CLOUD includes the following installations: a Kelvin Hughes Type 17/6 Radar, a Plath NAVIGAT II Gyrocompass, a Plath NAVIPILOT, a Plath Automatic Direction Finder w/Gyro Repeater, two Apelco Model MS-138L Holiday Sport Depth Indicators, one in the pilothouse and one on the flying bridge, an Intech Model V110 VHF/FM 55 Channel Radiotelephone in the pilothouse and an Intech Model V108 VHF/FM 12 Channel Radiotelephone on the flying bridge.

Mechanical equipment specified by the owner-captain includes Bennett Electro-Hydraulic Trim Tabs, Sperry Vickers Dolphin Stabilizers and Steering, and an ITT Single Channel Intercom Telephone System.

Housekeeping appliances and galley installations were selected with special care, for the Pierces intend to live aboard for extended periods.

Installations include a Westinghouse Model LT-170M Washer, a Westinghouse Model DE-170M Dryer, a GE Model J785 American Electric Range w/P7 Total Clean Oven System, a GE Model TFF-24DP Refrigerator Freezer, a GE Model CG550 Compactor and a NuTone Central Vacuum Cleaner System.

NEW BOAT DELIVERIES

Coming up for spring delivery is TIGER TAYL, a 63-footer being built for Ralph Taylor. The launching has been scheduled for early May.

Next will be a 66-footer for Clarence J. Bassler, Jr., WHO-DA-THUNK-IT, scheduled for a June launching and delivery.

The Burger Yard will wind-up a very busy year with the completion of an 86-footer in September and a 75-footer slated for a November launching.



Interiors by Ronnie Brahms, New York City.

SAFARI YACHT

"We've visited Africa several times, and we loved it so that we wanted to translate the exotic, lovely feeling into our boat" . . . the George Johnsons' new 75-foot AFRICAN QUEEN is filled with fascinating African art and artifacts . . . yet provides a warm and comfortable foil for family living and entertaining afloat. For a touch of humor, a painting of Bogart and Hepburn's original African Queen graces the main salon (lower left center).

The exotic new cockpit cruiser delivered to the Johnsons just one year ago is 75 feet overall with an 18' 5" beam dimension and 4' 6" draft. The GM 12V-71N diesel engines cruise her at a smooth-running 16 knots per hour. Fuel capacity of 2240 gallons and 1100 gallons of fresh water provide a range of 1500 miles for sea safaris.